

General notes related to construction and site assembly of all built-in fitment at both levels

All fitments constructed out of selected quality moisture resistant MDF board with surfacing to all internal shelving to be selected coloured 'Melamine' and all vertical surfaces and horizontal worktops (where specifically stated) to be selected laminate to all surfaces.

To the vertical external surfaces of the kitchen and vanity unit fitments, apply selected factory applied 'polyester' finish. All doors to be fitted with selected 'Hafele' (or similar approved concealed hinges to open to 180 degrees All drawers fitted with selected 'Hafele' (or similar approved) telescopic side mounted drawer runners.

All doors and drawers to be fitted with selected 100 long satin SS 'bar' handles located 50mm down from the top edges of doors and drawers and 50mm in from the vertical edges to the first point of fixing, with handles positioned in the horizontal plane.

Benchtops to the kitchens and vanity units to be 20mm thick selected 'CAESARSTONE' secured to a 20mm thick moisture resistant MDF sub-strate board.

All cooking and other appliances supplied by the owner are to be delivered to the joinery workshop of the appointed sub-contractor for this interior fitment work, for careful building in during the fitment construction process.

Fitments are to be constructed in sections as necessary to facilitate access to and assembly on the site.

Check all site sizes, levels and conditions prior to commencing construction of the fitments.

Do not scale drawings, figured dimensions take precedence over 'scaled' sizes and large scale details over smaller scale drawings.

Refer any variations and/or discrepancies the architect or owner and obtain clear verification before proceeding further with the work either on site or in the workshop. Read all detail sheets, one in conjunction with the other in order to obtain a full understanding of the architects design intentions and construction standards.

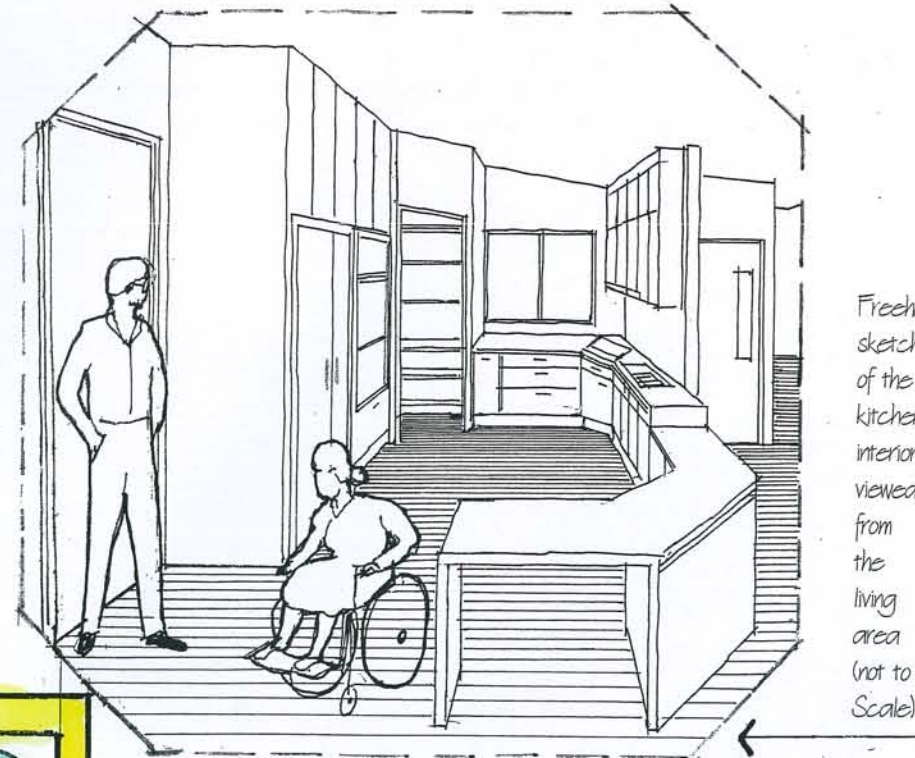
Waste disposal chute

Supply and install a 300mm diameter stainless steel waste disposal chute built into bench fitment in pantry where shown on plan.

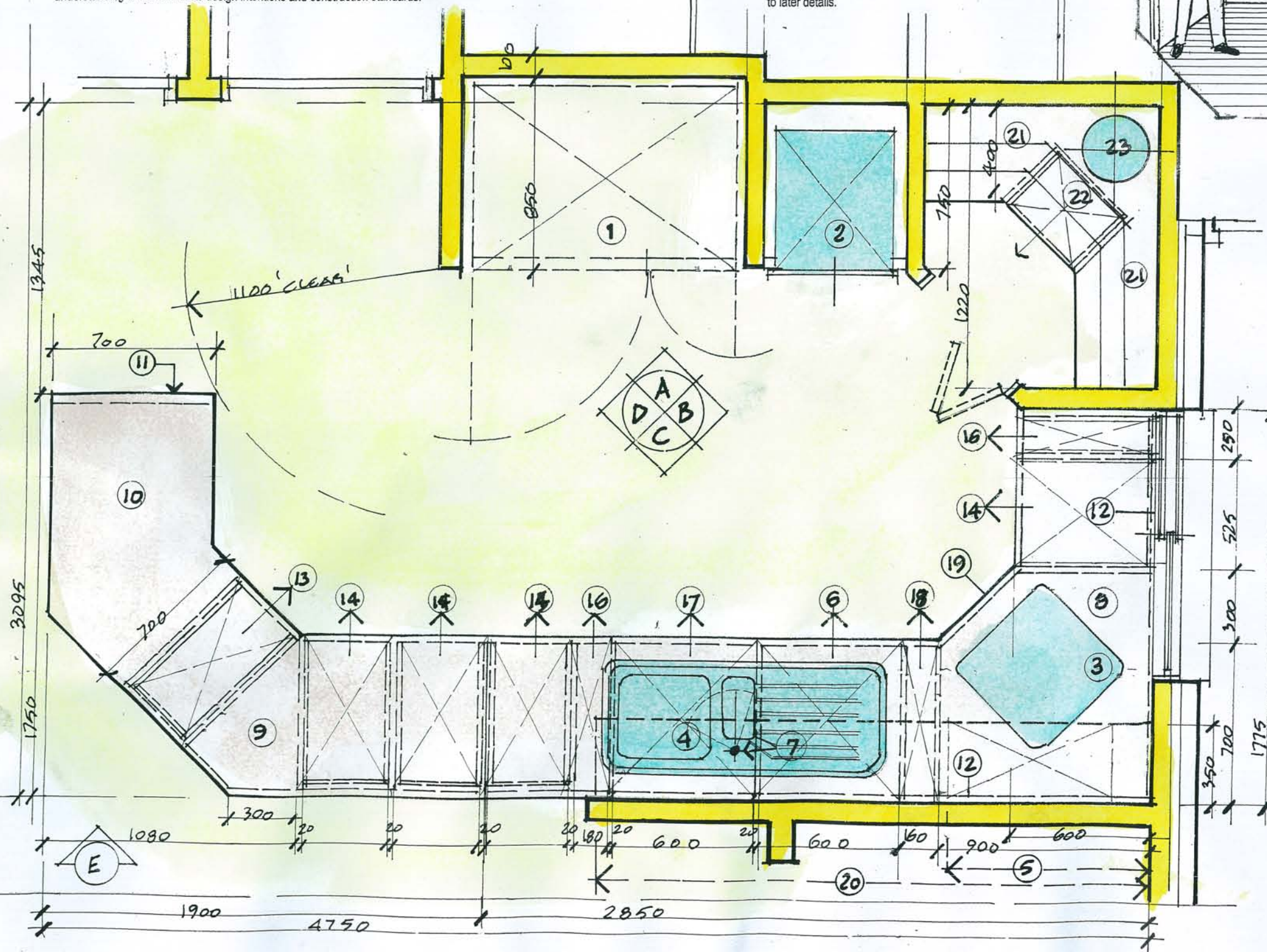
Chute fitted with lift-off circular stainless steel lid at the access point in the pantry with the chute having an angled section at the approx mid point of it's vertical length in the laundry under, to facilitate it's terminal point outside the external face of the house at the lower level.

This 'terminal' point to be at a height consistent with the discharge of 'bagged' non-recycleable waste material (as indicated in diagrammatic sectional detail on sheet 18/a) into the Council 'wheelie bin'

The opening of the terminal flap of the chute immediately above a designated 'wheelie' bin including the opening/closing of the wheelie bin lid, is to be by a system of cable operated controls located in the pantry is to be installed to later details.



Freehand sketch of the kitchen interior viewed from the living area (not to Scale)



Schedule of fitments/appliances to upper floor kitchen

• **Schedule of 'appliance' items**

- 1, Space for two (2) door refrigerator/freezer 1200w x 850d x 1800h
- 2, B.I. 'Meile' wall oven (H4271 BP (568w x 555d x 595h with 'Meile' microwave oven M8260 fitted into recess over wall oven'
- 3, B.I. 'Meile' cooktop (KM 572w X 502d flush mounted into bench-top as detailed.
- 4, B.I. 'Blanco' insert sink with right hand positioned 1.5 bowls (viewed frontally) overall size of sink 1160w x 510d (Cat No MCLZL)
- 5, B.I. 'Meile' model DA 2050 530 wide (ducted) Range-Hood flush mounted into underside of overhead storage cupds
- 6, B.I. 'Meile' dishwasher model No G 2220SCI fitted flush into cupd fitments with door panel of dishwasher fitted with panel to match door panels of fitments.
- 7, Selected 'LOOK' single (swivel) tap-set surface mounted on new insert sink unit.

• **Schedule of fitment items**

- 8, Selected 'Caesarstone' benchtop @ 900 ht from FFL with drawer units under as detailed
- 9, Selected 'Caesarstone' benchtop @ lower 750 ht from FFL with cupboard void space under as detailed
- 10, Selected 'Caesarstone' benchtop/meals bench @ 750 ht from FFL and 'clear' leg space under bench.
- 11, Vertical end panel faced with 'Caesarstone' supporting meals bench over.
- 12, Selected coloured glass splash backs to vertical face of wall interfacing the benchtops, as detailed
- 13, One (1) bank of three drawers in height x 400 wide as detailed
- 14, Three (3) banks of three drawers in height x widths as detailed
Note! the top narrow drawers to be fitted with selected 'Hafele' cutlery inserts
- 15, One (1) bank of three (3) drawers in height x 400 wide as detailed
Note! The top drawer fitted with a 'Hafele' Ironfix folding ironing board (Cat No 568.60.710) complete with 'sleeve board' and replacement cover.
- 16, Hinged door with silver anodised three (3) bar extendable tea towel rack (Hafele Cat No 510.54.932) side mounted to inner top face of cupd behind door.
- 17, 'Hafele Euro-Cargo 60 waste bin unit (Cat No 502.73.943) fitted to inside face of slide out panel 600mm wide. Note! height of waste bin unit to fit under waste pipes under sink.
- 18, Hinged door with 'Hafele' pull out storage unit side mounted to left hand inside face of cupboard behind door for the storage of kitchen cleaning accessories (Cat No 545.27.520)
- 19, 'Hafele' Mondo revolving corner cabinet fitting, with two (2) internal shelves and with one (1) diagonal (ie, 45 degrees) hinged corner door.
- 20, 2400 long x heights as detailed x 350 deep overhead storage cupboard, fitted with hinged doors and internal adjustable shelving as detailed.
- 21, White melamine surfaced MDF shelving at depths as detailed and adjustable in height on selected brass pin brackets, friction fitted into pre-drilled holes @ 30 cis
- 22, One (1) bank of four (4) plastic coated pull-out wire basket trays 450 w x 350 d.
- 23, New 300 OD stainless steel waste chute and lift-off cover, with waste chute to discharge 'bagged' waste matter into 'wheelie bin' at ground floor level as detailed.

Re-development of existing dwelling at 7, Imlay St., Merimbula NSW 2548

for, Alex Cochran and Desiree Parker, to provide full 'accessibility' throughout all habitable areas within and to the periphery of the extended house

WORKING DETAILS

1:20 scale plan details of kitchen at upper floor level

Project No, 2006-008
Date, 11.10.07
Scales, 1:20
Drawn, Harry

Sheet No, 17/a

Architect,
Harry Sprintz
FRAIA LFDIA MACAA
MA Design/Research for Disability
(Lond Guildhall unit)
Registered Architect
(NSW/ACT)
Interior Designer
(DIA Accredited)
Disability Access Planner
(ACAA Accredited)

Office,
Unit 7, 'Doncaster Apartments'
No 1 Heidelberg Avenue,
NEWINGTON NSW 2127
02-96482822 & 9648 2825
Facsimile, 02-9748 0060
Mobile No, 0411 632 674

Note !!
Refer to all other issued detail drawings and notes Of the built-in fitments and in particular to the 1:50 scale elevations and related large scale details on sheet No 18/a

Do not scale drawings, figured dimensions take precedence over 'scaled' sizes.

Check all site sizes, levels and conditions prior to commencing works