

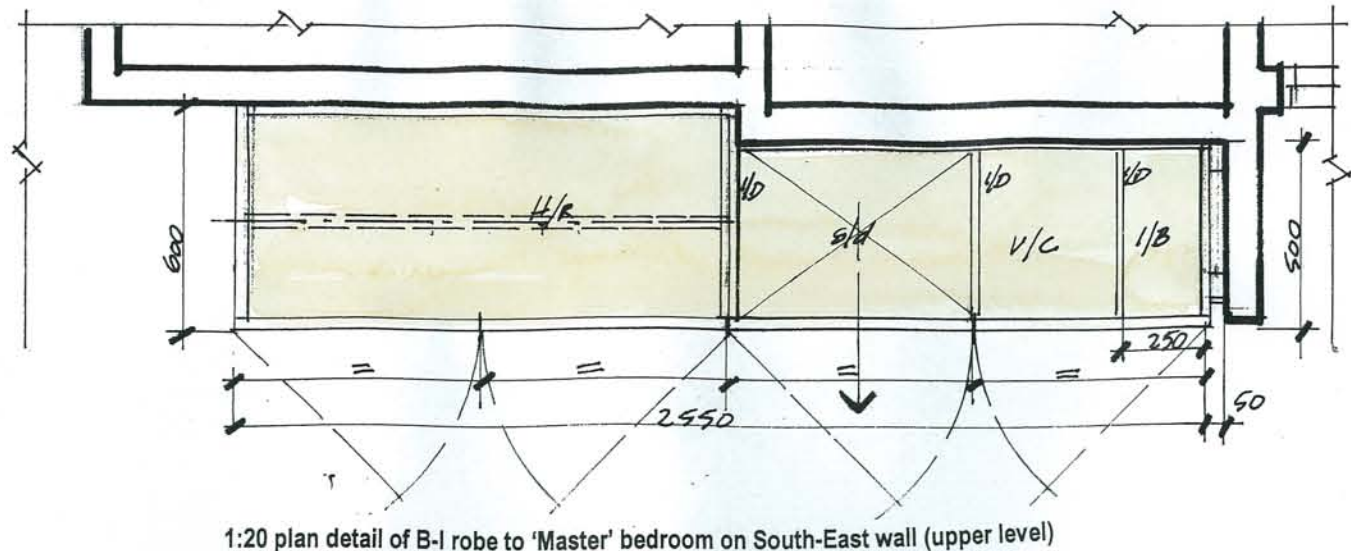
Re-development of existing dwelling at No 7, Imlay Street Merimbula NSW 2548 for, Alex Cochran and Desiree Parker, providing full 'accessibility' throughout all habitable areas within and to the vertically and horizontally extended house.

Working details of interiors
1:20 scale plans and 1:50 scale elevations of built-in fitments to bedrooms and storage areas

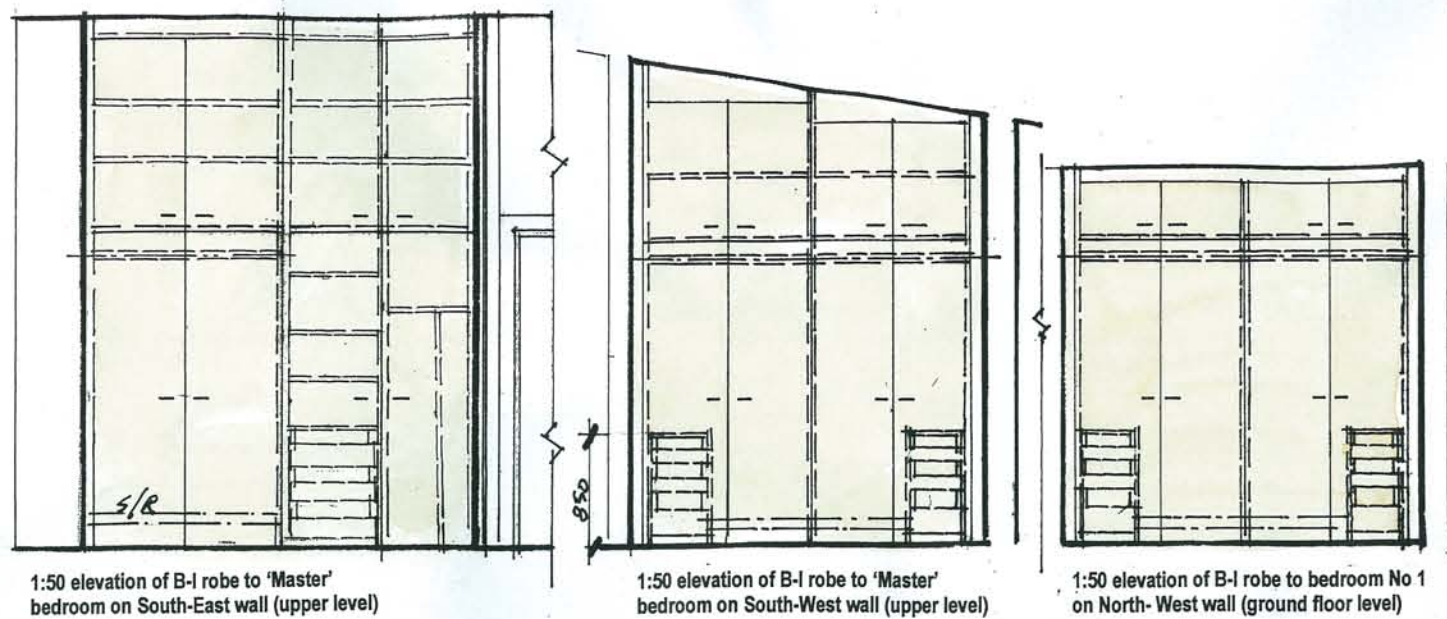
Project No, 2006-008
Date, 25.11.07
Scales, 50 & 1:20
Drawn, Harry
Sheet No, 25/a

Architect, Harry Spritz
FRAIA LFDIA FCSD M.ACAA
MA Design/Research for Disability (Lond Guildhall Univ)
Registered Architect (NSW/ACT)
Interior Designer (DIA Accredited)
Disability Access Planner (ACAA Accredited)
Office,
Unit 7, 1 Heidelberg Ave,
NEWINGTON NSW 2127
(phone) 96482822
Fax, 9748 0060
Mob, 0411 632 674
harryspritz@archinet.com.au

GENERAL NOTES (Interiors)
Do not scale this drawing, figured dimensions are to take precedence over 'scaled' sizes
Check all sizes and levels on site prior to commencing interior works.
Refer all variations and/or any discrepancies in the documentation with the architect and obtain clear verification before any continuance of the work on or off the site
Cross reference this detail sheet with all other issued fitment detail:



1:20 plan detail of B-I robe to 'Master' bedroom on South-East wall (upper level)

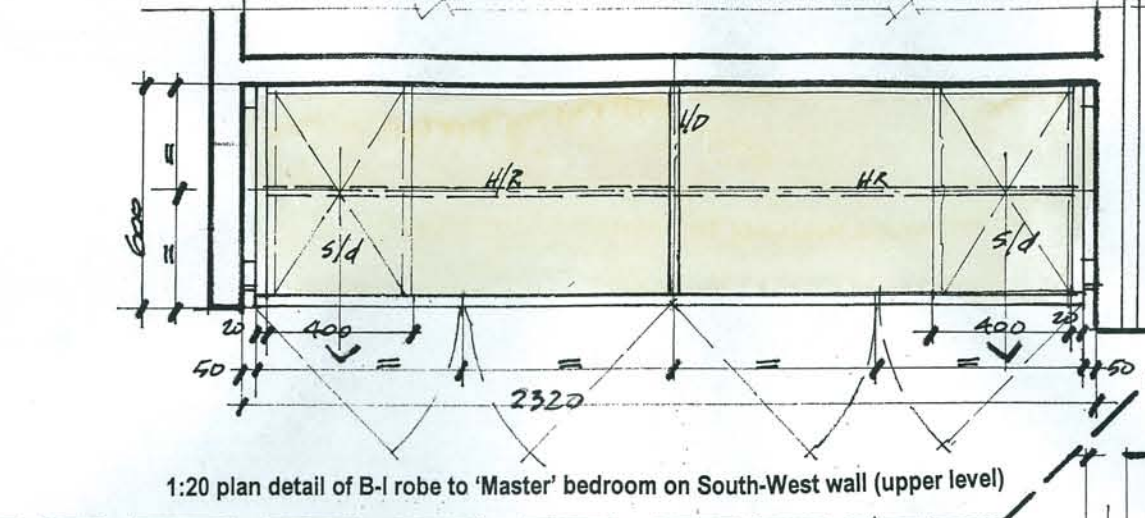


1:50 elevation of B-I robe to 'Master' bedroom on South-East wall (upper level)

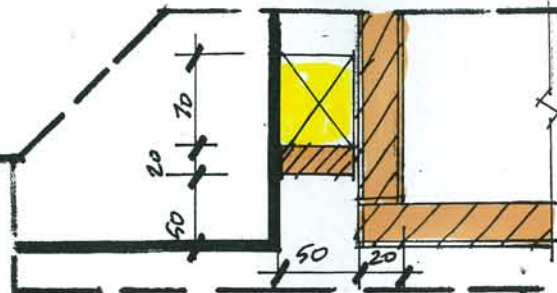
1:50 elevation of B-I robe to 'Master' bedroom on South-West wall (upper level)

1:50 elevation of B-I robe to bedroom No 1 on North-West wall (ground floor level)

NOTE!
The 1:20 plan detail of B-I robe to Bedroom 1 on the North-West wall at Ground floor level is similar to the upper floor robe on the South-West wall with the exception of the left hand gable end being 'free standing' (ie, no wing wall)



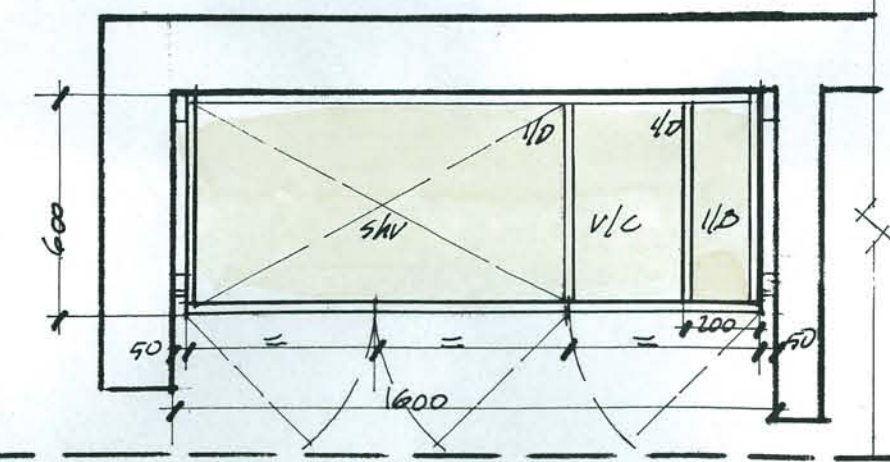
1:20 plan detail of B-I robe to 'Master' bedroom on South-West wall (upper level)



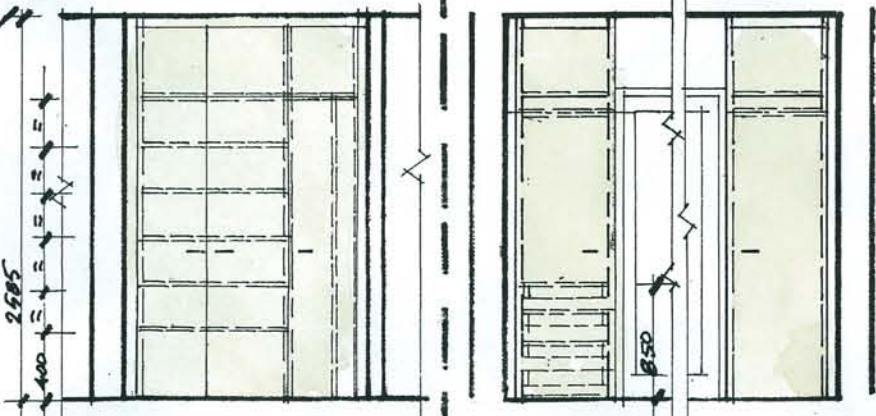
1:5 scale plan detail of interface of typical B.I. unit gable end and internal wall surfaces

Fitment construction and finishes notes related to built-in units to bedrooms and general storage areas

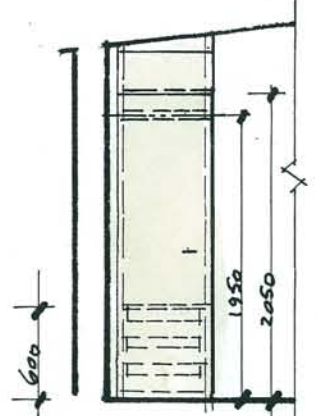
- All fitments including doors to built-in robes constructed out of min 20mm thick MDF board lined with 'Melamine' to selected colour and edged to all surfaces.
- Colour of melamine lined doors and panelling facing the interior of rooms is to match (as closely as possible) the colour of the painted walls and ceilings.
- All cupboard doors fitted with selected 'Hafele' 180 degree opening arc, concealed hinges and 150mm long satin SS horizontally aligned 'Hafele' 'D' pull handles.
- All internal shelving and vertical dividers to be min 18 thick MDF board surfaced and edged with satin white Melamine and fitted with selected 'Hafele' brass pin shelf brackets friction fitted into pre-drilled holes to support shelving in fitment gable ends and intermediate panels @ 50mm Cts.
- Hanging rails to be 30mm od SS tubes, fitted with top flanges screw fixed @ 800 cts horizontally with end flanges screw fixed to u/side of shelving and vertical panel interfaces, with full 'height' hanging @ 1700 clear height and half hanging @ 1100 clear height
- Refer to sketch detail for slide-out storage drawers in robes, where shown, with size of drawers adjusted to suit each robe interior.
- supply and fit 20mm dia polished timber dowelling shoe rails where shown on 1:50 scale elevations



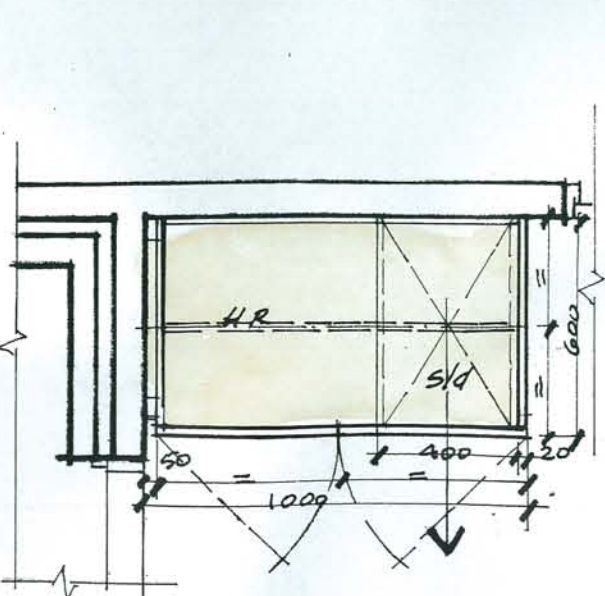
1:20 plan detail and 1:50 scale elevation of storage cupboard at ground floor level



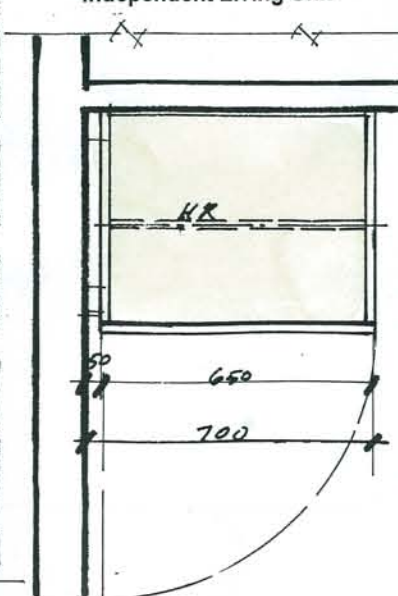
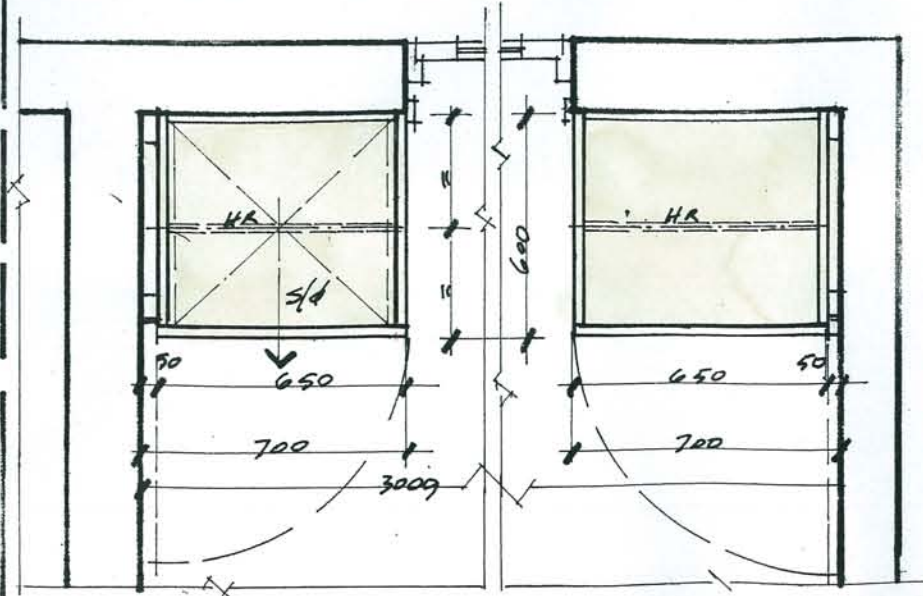
1:20 plan detail and 1:50 scale elevation of two (2) B.I. robes to bedroom No 2 (Grd floor level)



1:20 plan detail and 1:50 scale elevation of B.I. robe to bedroom No 2 (upper floor level) Independent Living Unit



1:20 plan detail and 1:50 scale elevation of B.I. robe to bedroom 3 (upper floor level)



- LEGEND**
- H/R Apparel hanging rails as detailed
 - S/D Pull-out storage drawers
 - I/B Ironing board storage space
 - V/C Vacuum Cleaner storage space
 - SH/V Shelving adjustable in height
 - S/R Shoe storage rails
 - I/D Internal division panel