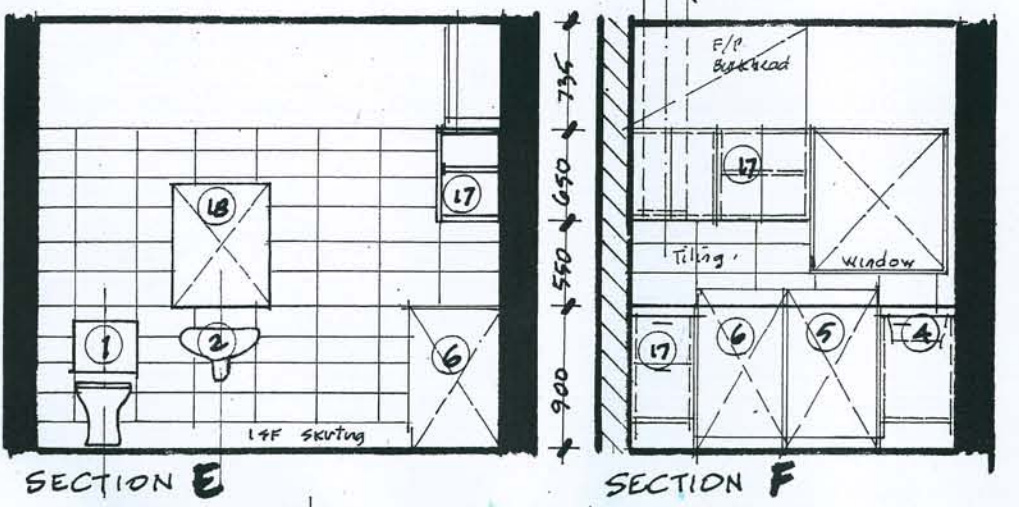
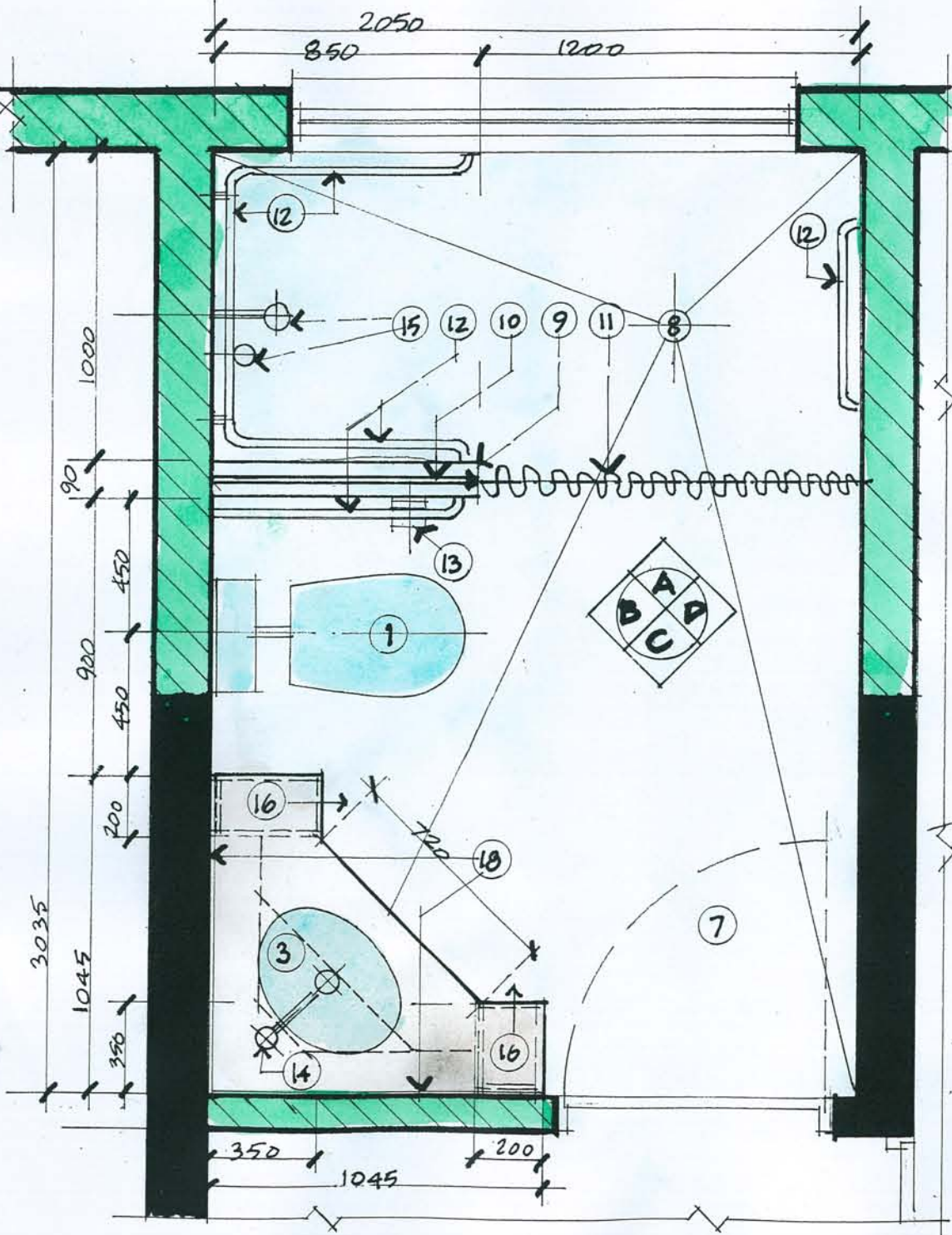


SECTION A

SECTION B

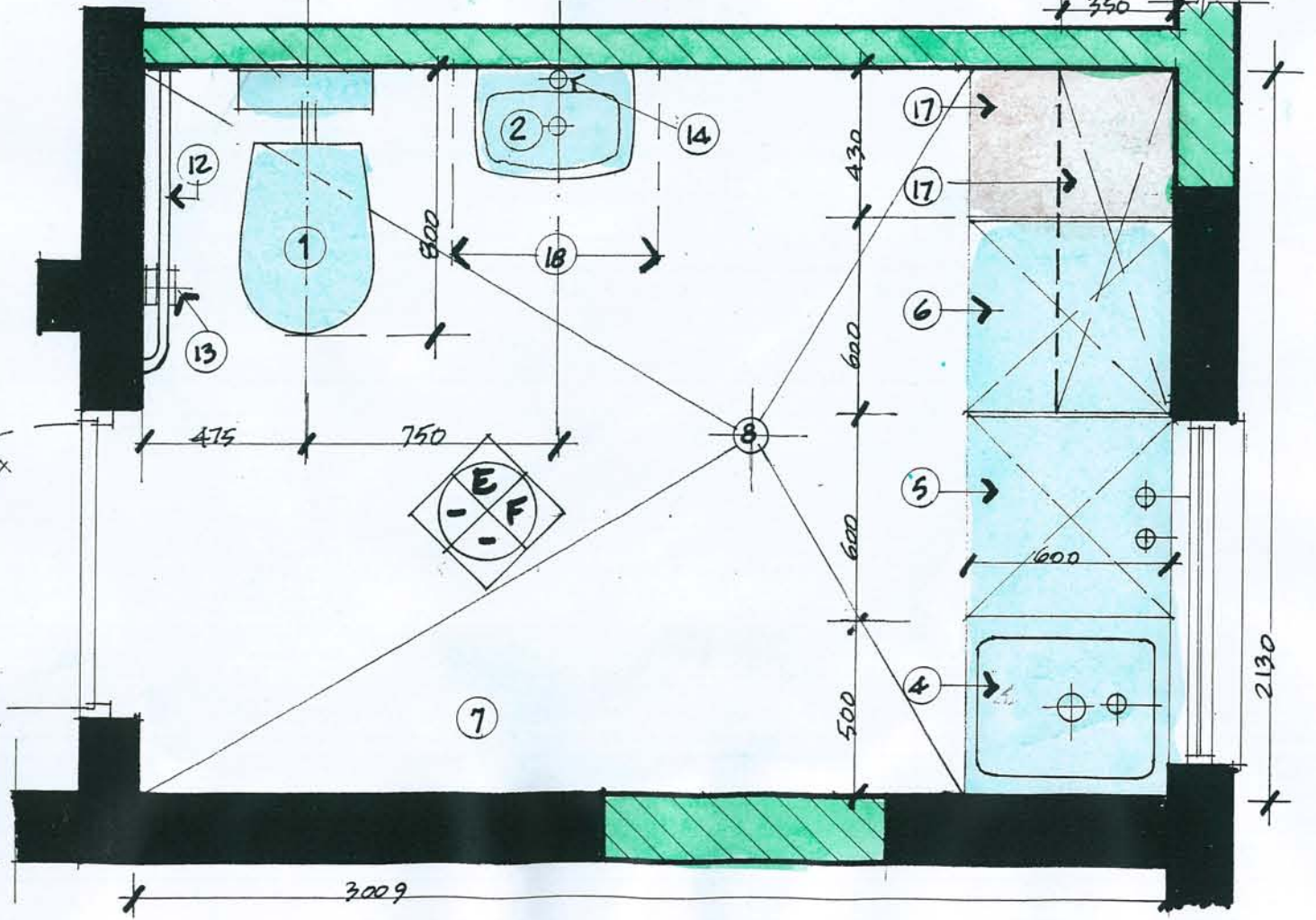
SECTION C

SECTION D



SECTION E

SECTION F



Schedule of fitments/appliances to ground floor level bathroom and laundry

- **Schedule of 'appliance' items**
 - 1, Selected 'Caroma' or similar approved white VC 'care pan with concealed trap, surface mounted VC cistern, Colani seat and flap, with pan set out from back wall 800mm to facilitate use of a 'Commode'
 - 2, Selected 'Caroma' or similar approved white VC 'Faun 450' complete with VC 'shroud' and single tap hole & fixing brackets.
 - 3, Selected 'Caroma' or similar approved Caravelle 600' under counter VC vanity basin complete with soap holder and single tap outlet, fitted under vanity bench top as detailed.
 - 4, Selected satin SS 450 w x 500d laundry insert wash tub built into laminate surfaced MDF sub-strate bench top with pedestal cabinet under fitted with hinged door.
 - 5, Meile 'front loading washing machine 'Navitronic' W3985WPS (this supersedes W 487)
 - 6, Meile 'front loading clothes dryer 'Navitronic' model No T 8685 C (this supersedes T 270C)
 - **Schedule of fitment/finishes items**
 - 7, Selected 'ALTRO' 2mm thick ISF slip resistant (R-10) vinyl sheet flooring, laid to falls as specified on underlayment screed and fitted with 200h coved skirtings interfacing with wall tiling as specified..
 - 8, CP floor wastes flush mounted on Altro flooring as detailed, connected to drainage as specified.
 - 9, 850w x 1000h, steel stud 'hob' wall lined with plasterboard and tiled to both sides and top surface as detailed.
 - 10, Clear 10mm thick safety glass screen 850w x 1200h fixed to wall and tiled hob wall with selected SS patch-panel fixings.
 - 11, Selected 'Hospital type' shower curtain rail fixed to wall and glass panel by selected SS fixing brackets as detailed.
 - 12, 32 od ms pre-shaped and powder coated support rails complete with flanged concealed fixings into walls. Support rails to lengths and profiles as detailed and to site instruction.
 - 13, Selected SS toilet roll holder surface fixed to wall to site instructions
 - 14, Selected CP single stem 'LOOK' tap sets with swivel action and arrestor controls.
 - 15, Selected CP 'LOOK' multi-function' hand held shower sets with CP flexible hose and a single stem selected 'LOOK' shower set tap.
 - 16, Selected laminate faced MDF constructed vanity unit fitted with two (2) sets of drawers to each side of inset vanity basin and a recessed panel under the vanity bowl to provide wheelchair/knee access under vanity unit, all as detailed.
 - 17, Selected laminate faced MDF constructed lower bench unit and upper level unit fitted with hinged doors and shelving as detailed
 - 18, 1200 h mirror panels x 1045 w x 2 adhered to walls over vanity unit in bathroom and one (1) 600w over basin in laundry as detailed.
- Wall surface treatment** - To bathroom and laundry, lay wall tiling up to door head height (ie, 2100) with selected 400 x 200 glazed ceramic tiles in horizontal format and in a selected neutral colour, with the balance of the wall surface painted on new and existing concrete block walls and p/board bulkhead in laundry above door head height to ceiling finished in satin acrylic paint (one u/coat and two finishing coats) as specified

Re-development of existing dwelling at 7, Imlay St Merimbula NSW 2548 for, Alex Cochran and Desiree Parker, to provide full 'accessibility' throughout all habitable areas within and to the periphery of the extended house

WORKING DETAILS
1:20 & 1:50 scale details of bathroom and laundry at grd floor level

Project No, 2006-008
Date, 18.10.07
Scales, 1:20 & 1:50
Drawn, Harry

Sheet No, 21/a
Architect,
Harry Sprintz
FRAIA LFDIA M.ACAA
MA Design/Research for Disability
(Lond Guildhall univ)
Registered Architect
(NSW/ACT)
Interior Designer
(DIA Accredited)
Disability Access Planner
(ACAA Accredited)

Office,
Unit 7, 1 Heidelberg Ave,
NEWINGTON NSW 2127
02-96482822 & 9648 2825
Facsimile, 02-9748 0060
Mobile No, 0411 632 674