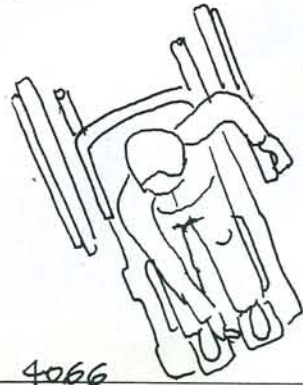
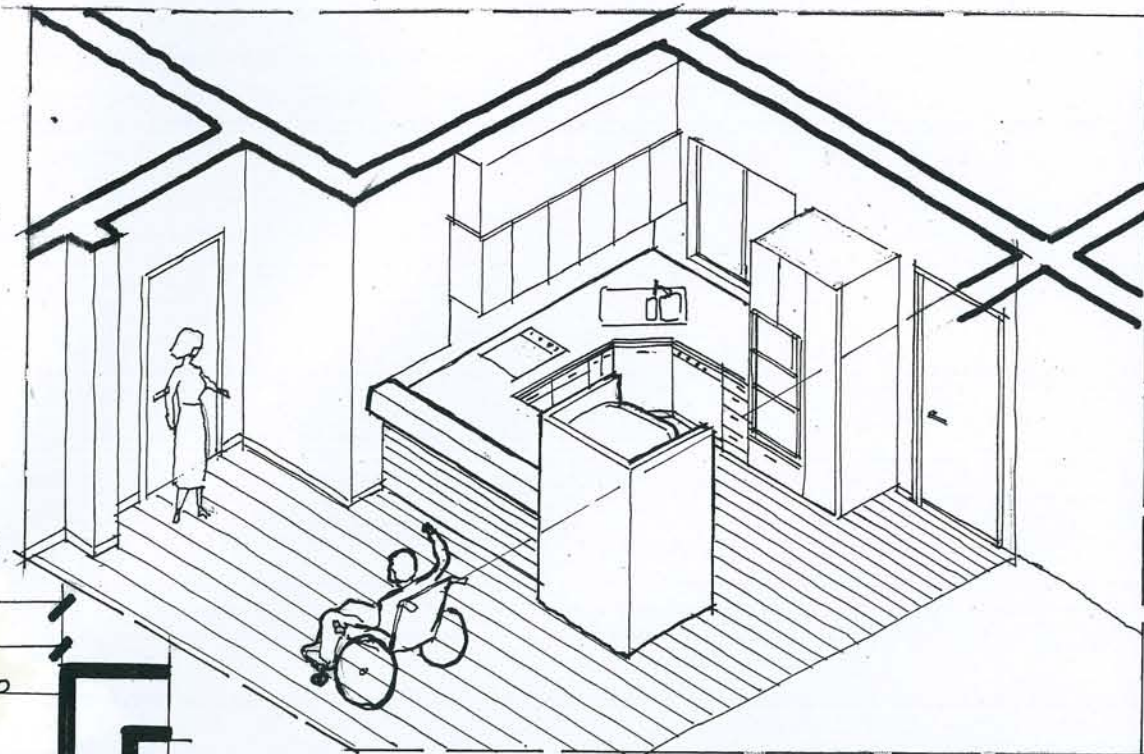


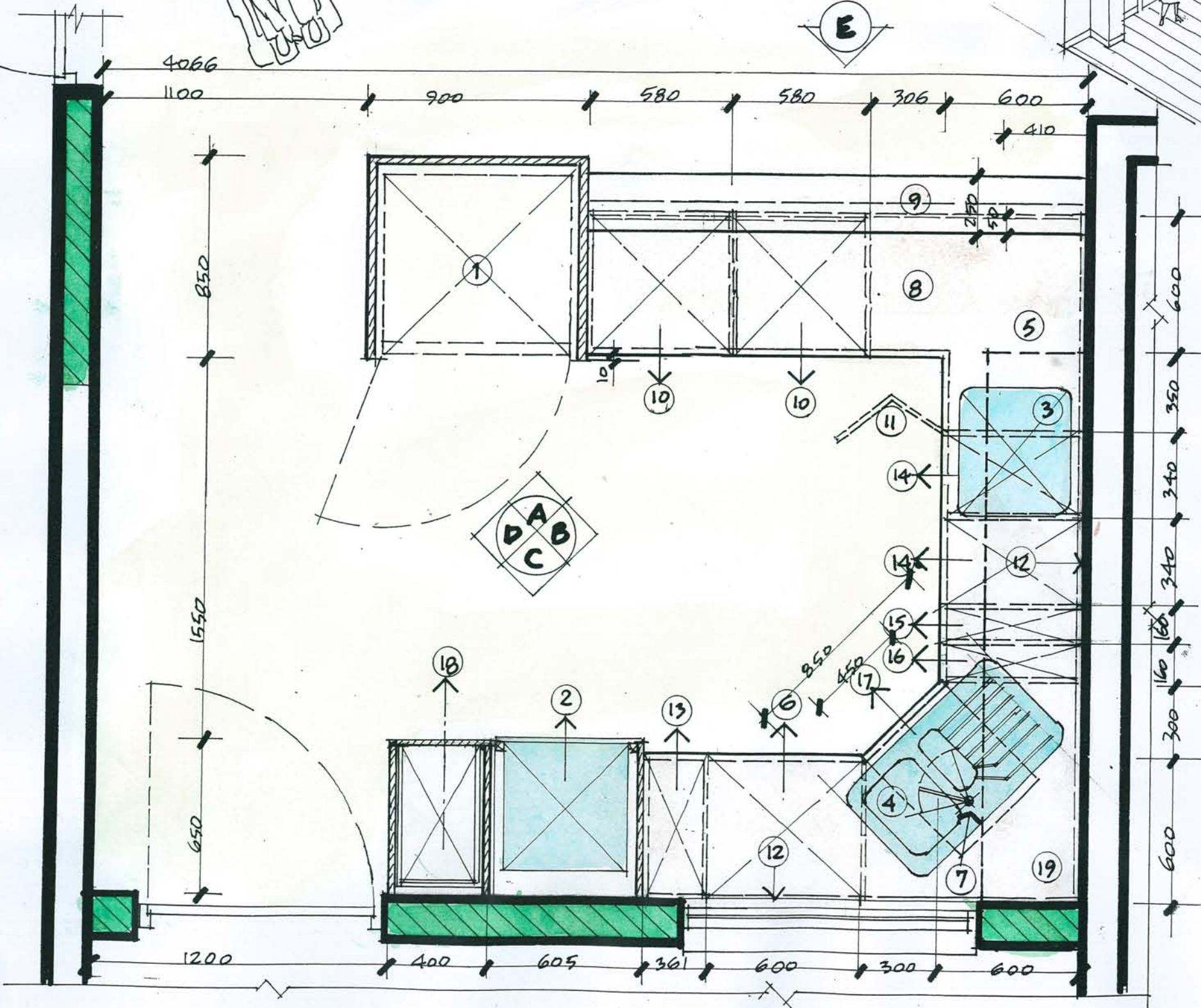
Cross reference this sheet (19/a) with the sectional details on sheet No 20/a for schedule of fitments/appliances to ground floor kitchen and to sheet No 17/a for general notes related to construction and site assembly of all built-in fitments.



Recessed 'quartz halogen' lighting to underside of upper level cupboards
Supply and install a minimum of three (3) 'Hafele' ECONO quartz halogen light fittings (Cat No 823.94.220) flush mounted into thickness of the bottom shelf of the upper level cupboards, spaced as directed by architect.



Freehand aerial sketch of the kitchen interior viewed from the living area (not to scale)



Schedule of fitments/appliances to ground floor level kitchen

• Schedule of 'appliance' items

- 1, Space for single door refrigerator/freezer 840w x 830d x 1800h (inside sizes)
- 2, B.I. 'Meile' wall oven (H4271 BP (568w x 555d x 595h with 'Meile' microwave oven M8260 fitted into recess over wall oven and with cooking utensil deep drawer under
- 3, B.I. 'Meile' cooktop (KM 520) 572w X 502d flush mounted into bench-top as detailed.
- 4, B.I. 'Blanco' insert sink with right hand positioned 1.5 bowls (viewed frontally) overall size of sink 850w x 510d
- 5, B.I. 'Meile' model DA 2050 530 wide (ducted) Range-Hood flush mounted into underside of overhead storage cupds (item 19)
- 6, B.I. 'Meile' dishwasher model No G 2220SCI fitted flush into cupboard fitments with door panel of dishwasher fitted with panel to match door panels of fitments.
- 7, Selected 'LOOK' single (swivel) tap-set surface mounted on new insert sink unit.

• Schedule of fitment items

- 8, Selected 'Caesarstone' benchtop @ 900 ht from FFL with drawer units under as detailed
- 9, Selected polished Blackwood timber counter top with horizontally boarded 100 x 12 T&G boarding to living room side of counter front as detailed
- 10, Two (2) banks of three drawers to sizes as detailed with the top two drawers fitted with selected 'Hafele' cutlery inserts.
- 11, Corner cupboard doors in two (2) leaves to widths as detailed, providing access to lower level storage cupboard fitted with two (2) shelves adjustable in height on selected 'Hafele' brass pin brackets fitted into pre-drilled holes in carcass gable ends @ 50 cts.
- 12, Selected coloured glass splash backs to vertical face of wall interfacing the benchtops, as detailed
- 13, One (1) bank of two (2) drawers in height x widths as detailed.
- 14, Two (2) banks of three (3) drawers in height x widths as detailed with one of the top drawers (as directed on site) fitted with a 'Hafele' Ironfix folding ironing board (Cat No 568.60.710) complete with 'sleeve board' and replacement cover.
- 15, Hinged door with one (1) silver anodised three (3) bar extendable tea towel rack. (Hafele Cat No 510.54.932) side mounted to inner top face of cupboard behind doors where shown on plan.
- 16, Hinged door with 'Hafele' pull out storage unit side mounted to left hand inside face of cupboard behind door for storage of kitchen cleaning accessories (Cat No 542.27.520)
- 17, 'Hafele Euro-Cargo 45 waste bin unit (Cat No 502.73.921) fitted to inside face of slide out panel 600mm wide. Note 1 height of waste bin unit to fit under waste pipes under sink.
- 18, 'Hafele' pull out pantry unit Cat No 546.87.242) to widths and heights as detailed
- 19, Overhead storage cupboard surface fixed to wall to widths and height as detailed and incorporating the built-in range hood unit (item 5)

Re-development of existing dwelling at 7, Imlay St., Merimbula NSW 2548 for, Alex Cochran and Desiree Parker, to provide full 'accessibility' throughout all habitable areas within and to the periphery of the extended house

WORKING DETAILS

1:20 scale plan details of kitchen at ground floor level

Project No, 2006-008
Date, 16.10.07
Scales, 1:20
Drawn, Harry

Sheet No, 19/a

Architect,
Harry Sprintz

FRAIA LFDIA M.ACAA
MA Design/Research for Disability
(Lond Guildhall univ)

Registered Architect
(NSW/ACT)

Interior Designer
(DIA Accredited)

Disability Access Planner
(ACAA Accredited)

Office,
Unit 7, 'Doncaster Apartments'
No 1 Heidelberg Avenue,
NEWINGTON NSW 2127
02-96482822 & 9648 2825
Facsimile, 02-9748 0060
Mobile No, 0411 632 674

Note !!

Refer to all other issued detail drawings and notes Of the built-in fitments and in particular to the 1:50 scale elevations and related large scale details on sheet No 20/a

Do not scale drawings, figured dimensions take precedence over 'scaled' sizes.

Check all site sizes, levels and conditions prior to commencing works